



Health, Safety, Environment & Community

CONFERENCE 2025 | LEARNING & LEADING

SPEAKER PROFILES

PLATINUM SPONSORS

GLENCORE



PLENARY SESSION 1

Keynote Presentations



RACHAEL ROBERTSON
Former Antarctic expedition leader,
Chief Ranger and leader

Leadership Lessons from Antarctica

Rachael Robertson is a former Antarctic expedition leader who led the 58th Australian National Antarctic Research Expedition to Davis Station, becoming only the second woman to do so. For 12 months, she managed the safety, welfare and performance of up to 120 people in one of the world's most extreme and isolated environments. With 16 years of senior operational leadership experience prior to Antarctica, Rachael now shares her unique insights through keynotes and leadership development. She holds an MBA and is the author of two best-selling books, *Leading on the Edge* and *Respect Trumps Harmony*, focused on building resilient, high-performing teams.



STEPHEN SCHEELER
Founder of the Digital CEO

The Future of Digital Disruption & A.I.

Stephen Scheeler is Australia's leading voice on digital disruption, A.I., culture and leadership. As the former Facebook CEO for ANZ, he helped guide the company's rise from Silicon Valley start-up to global tech titan. His acclaimed TEDx talk, *The Oldest Guy at Facebook*, shares lessons from that journey. Today, Stephen is CEO of AI startup Omniscient, winner of the SXSW Innovation Award, and founder of advisory firm The Digital CEO. A media commentator and Executive-in-Residence at AGSM, Stephen combines rare insight with humour and humility to inspire audiences on the future of technology and its impact on leadership.

ENVIRONMENT & COMMUNITY STREAM SESSION 1

Future outlook for mining project assessments in NSW



ROBIN GRIFFIN
Vice President, Metals & Mining
Research, Wood Mackenzie

Global demand for resources - what the future looks like for mining in NSW

Robin Griffin is Vice President of Metals & Mining Research at Wood Mackenzie, leading global market analysis for metals and mined commodities. With 28 years of experience in mining operations, research, and consulting, Robin specialises in resource demand forecasting and market trends. Since joining Wood Mackenzie in 2003, he has held roles across coal and base metals research, mine cost estimation, and global supply analysis. Prior to this, Robin worked across Asia and Australia in coal procurement, exploration, project development, and marketing. He holds a BSc (Hons) in Geology and an MSc in Mining Engineering from the Camborne School of Mines.



SAMANTHA DALY
Partner, Johnson Winter Slattery

Surviving lawfare - Understanding what's been happening in NSW, who is driving lawfare, the tactics being used and notable trends

Samantha Daly is a Partner at Johnson Winter Slattery and leads the firm's national property, planning, environment and construction practice. An environment and planning specialist, she advises clients across the energy, resources, property and infrastructure sectors. Samantha has extensive experience supporting the mining industry, including regulatory approvals, compliance, climate change, water, nature markets, mine closure and cultural heritage. She regularly advises on project risk and regulatory investigations and is an experienced litigator in planning and environment matters. Samantha is known for her practical, strategic advice and deep understanding of the evolving legal landscape impacting mining and major development in NSW.



STEVE O'DONOGHUE
Department of Planning, Housing and
Infrastructure

Project assessments in NSW - key policy challenges from the assessments/regulators perspective

Steve manages a team that undertakes all of government assessments of coal and mineral mines, gas projects including gas extraction, pipelines and power stations in NSW. He has been working for the NSW Government on mining projects for around 25 years in both a compliance and assessment role within the Planning Department and Environment Protection Authority.

HEALTH & SAFETY STREAM SESSION 1

Operational Safety Management



STEVE FIELD
General Manager Health, Safety & Training, Centennial Coal

Centennial Coal's Fatal Risk Assessment Program - Leaders Visibility to Critical Control Health

Steve Field is General Manager of Health, Safety & Training at Centennial Coal, bringing 35 years of experience in the NSW underground coal mining industry. His career journey spans frontline production to corporate leadership roles, with a strong focus on sustainable and modern practices that improve workplace safety and wellbeing. Steve is dedicated to fostering collaboration across the industry and learning from peers to implement practical, best-practice solutions. He leads Centennial Coal's Fatal Risk Assessment Program, emphasizing leaders' visibility to critical controls and advancing a safety culture that protects all personnel.



DANIEL HORNIBROOK
Consultant, Brady Heywood

Centennial Coal's Fatal Risk Assessment Program - Leaders Visibility to Critical Control Health

Daniel Hornibrook is a consultant at Brady Heywood, specialising in helping clients develop strong risk management systems to better understand major risks and build robust controls. An economics graduate, Daniel applies his analytical skills to help clients leverage data for real-time insights into system performance. He is passionate about visiting client sites to uncover the context behind the numbers, ensuring data is transformed into actionable strategies. Daniel's practical approach supports organisations in improving safety outcomes and operational resilience through effective risk identification and control management.



LAUREN ROSS
Manager People & Culture, Newcastle Coal Infrastructure Group (NCIG)

Leading an Empowered Culture of Safety

Lauren Ross is an experienced leader in the infrastructure and mining sectors, with over two decades of expertise in workplace health and safety, organisational culture, and people strategy. Currently serving as Manager – People & Culture, Lauren began her career in workplace health and safety, developing a strong technical foundation that continues to inform her holistic approach to workforce wellbeing and engagement. Passionate about aligning people strategies with operational excellence, she brings valuable insight into how mining and infrastructure organisations can foster resilient, engaged, and high-performing workplaces.



ANTHONY MARGETTS
Chief Inspector of Mines
Resources Regulator, Resources NSW

New Vehicle Interaction Guidance

Anthony Margetts is the Chief Inspector of Mines at the NSW Resources Regulator, with more than 20 years of experience in the Australian mining industry. He holds a Bachelor of Engineering (Mining) and a Mine Manager's Certificate of Competency. In his current role, Anthony leads the mine safety inspectorate team responsible for statewide compliance and enforcement activities under WHS legislation. His career spans a variety of roles in both underground and open-cut operations, including positions in mining engineering and senior operational leadership, giving him deep insight into the challenges and opportunities facing the sector.



KENT TAYLOR
Mining Engineering Manager and HSEC Manager, Whitehaven Coal

New Vehicle Interaction Guidance

Kent is a mining engineering, operations and safety professional with over 20 years of experience in the mining industry. He has worked for BHP, Rio Tinto, Idemitsu, Thiess and Whitehaven, across QLD, NSW, WA and the Northern Territory, in a variety of commodities including coal, iron ore and base metals.

Kent currently works as the Mining Engineering Manager and HSEC Manager for Whitehaven Coal at their Maules Creek Coal operation.



TONY WATSON
Northern District Industry Safety and Health Representative, Mining Energy Union

New Vehicle Interaction Guidance

Tony Watson has nearly 40 years of experience in the mining industry, working across both underground and open-cut operations. For the past eight years, he has served as an Industry Safety and Health Representative, advocating for improved safety standards and workers' rights. With a strong focus on practical, frontline safety, Tony is committed to driving cultural change and embedding best practice across mining workplaces. His deep industry knowledge and passion for protecting workers' health and wellbeing make him a respected voice in the sector and a strong advocate for safer mobile plant operations.

ENVIRONMENT & COMMUNITY STREAM SESSION 2

Community Engagement



FIONA MURFITT
VP – Sustainability (HSET, Risk & Social Performance), Evolution Mining

Evolution First Nation Summit – It starts with One....

Fiona Murfitt is Vice President – Sustainability at Evolution Mining, overseeing Health, Safety, Environment, Risk, Social Performance, and First Nations portfolios. With extensive executive and operational experience in high-risk industries, Fiona brings deep technical expertise and a passion for driving meaningful change. Known for connecting strategy with delivery, she fosters trusted relationships and sustainable outcomes. Her personal commitment to safety stems from experiencing a family workplace fatality, fuelling her mission to ensure people go home better than they arrived. Fiona holds qualifications in business, law, risk, and leadership, and currently serves on the board of the Gold Industry Group.



CHARMAINE SALTNER
Group Manager Indigenous Relations and Community Partnerships, Evolution Mining

Evolution First Nation Summit – It starts with One....

With over 10 years' experience in the industry, Charmaine has been a champion for shifting commitment to meaningful action by understanding the unique experiences and culture of First Nations Group across Australia and Canada. Charmaine has been working with Leadership Teams and practitioners in Indigenous Relations to step in to the space and lead with impact, encouraging and empowering teams to stay in the uncomfortable for longer. The history of reconciliation has many stories of one person making a statement, leading change or challenging the norms. In many cases it takes one thought, one conversation or one moment to have an impact, this session explores the power of one thought and stepping away from the uncertainty or fear of not getting it right.



STEPHANIE PENALES
ESG & Social Responsibility Lead, Evolution Mining

Evolution First Nation Summit – It starts with One....

Stephanie is the ESG & Social Responsibility Lead at Evolution. In this role, she focuses on monitoring the ESG and regulatory reporting landscape to support the meeting and, where possible, exceeding of the company's compliance requirements. Her work is complemented by efforts in the social responsibility space, particularly in community relations, Indigenous relations, and stakeholder engagement and participation. The key drivers for her work are the communities within which Evolution operates and collaborates, as well as maintaining the company's social licence to operate.

HEALTH & SAFETY STREAM SESSION 2

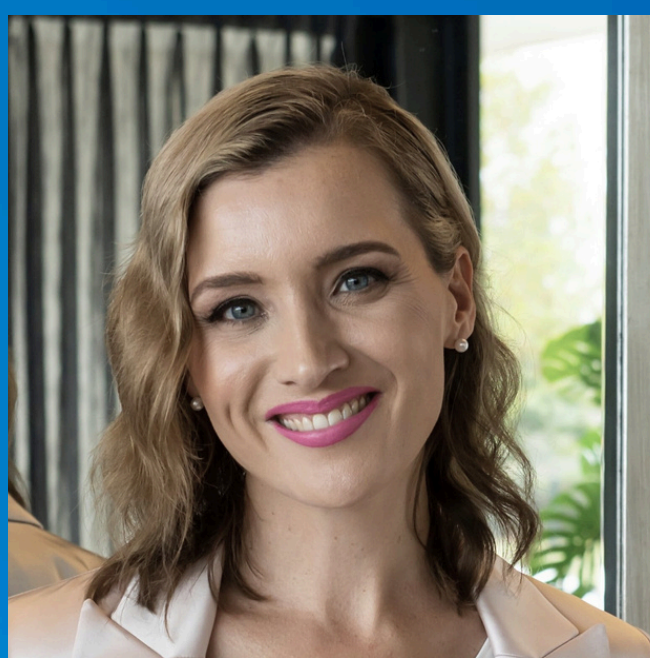
Building Safer, Stronger Workplace Cultures



PETER REDWIN
Executive Project Director – Hunter Transmission Project, EnergyCo

Renewable Energy Projects and Community Engagement - Are there any lessons for the NSW mining industry

Peter Redwin has recently been appointed as the Executive Project Director for the Hunter Transmission Project (HTP) at EnergyCo. Prior to his current role Peter was involved with preparing and implementing the Interface Agreements (TPA's) with the mines and councils whilst working on the Central West Orana Renewable Energy Zone (CWO REZ). Peter has practical experience of constructing Transmission Lines in Australia and Asia. Prior to joining EnergyCo, Peter was the Operations and Maintenance Manager for WestConnex and in this role sat on multiple Community Consultation Committees.



DR SKYE CHARRY

Respect at Work Conversations

Dr Skye Charry is an Associate Professor of Law at the University of New England and a national expert on workplace sexual harassment and rural culture. She co-founded S.A.C. Consulting Australia, delivering workplace culture reviews, gender equity strategies, and sexual harassment training nationwide. Dr Charry's research informed the Australian Human Rights Commission's Respect@Work report. She authored Whispers from the Bush, a seminal study on rural workplace harassment that inspired the documentary Grace Under Fire. Skye also serves as an Independent Director on the National Rural Women's Coalition and advises the Australian & New Zealand Mental Health Association.



STEVE WILLIAMS
Executive Director, Safer Together

Safer Together: How the Australian Energy Production Industry is collaborating to build a strong, sustainable and psychologically safe culture.

Williams is Executive Director of Safer Together, a collaboration focused on building a strong, sustainable, and psychologically safe culture within the Australian energy production industry. A Mechanical Engineer with an MBA, Steve has over 30 years of experience as an HSE professional in the Oil and Gas sector. Since Safer Together's inception in 2013, he has played a key leadership role. Originally from Sydney, Steve has worked internationally across the US, Oman, the Philippines, and Russia, and now lives in Perth. Outside work, he's married with three children and a passionate South Sydney Rabbitohs supporter.

PLENARY SESSIONS 2 & 3

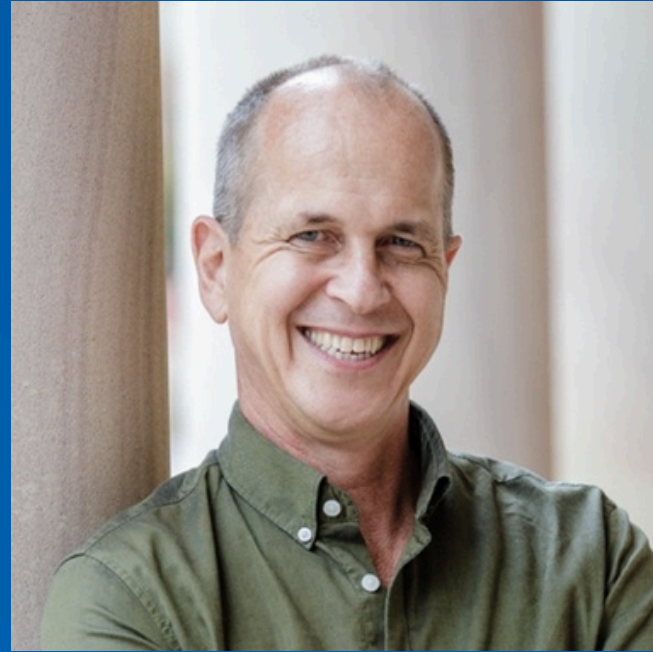
Keynote Presentations



YAMINI NAIDU
Speaker, Author & Business Storyteller

Culture, Performance & Teams: The Power of Storytelling

For over a decade, Yamini Naidu has been working with business leaders throughout the world, showing them how to quantum-leap their influence for commercial results, to grow revenue and how to stand out in crowded markets. Yamini has made the personal and professional shift from a high-powered corporate job, the world of spreadsheets to the setting up of Australia's first company in storytelling. Delivering both inspiring and insightful keynotes and workshops, Yamini has taken her expertise worldwide; notably working with Fortune 500 Companies and ASX top 100 companies. Yamini Naidu is a master in organisational storytelling who will delight audiences. She is a much sought after presenter due to her understanding of the issues corporations face, and her ability to work effectively with a broad range of stakeholders.



PETER GRETE
Former Foreign Correspondent

Coping with crisis: Lessons in resilience from a convicted terrorist

Professor Peter Grete is Australia's most unlikely convicted terrorist. A foreign correspondent with 25 years experience, he was in Egypt covering the unfolding political crisis when he and two colleagues were arrested and charged with terrorism offences. They were convicted in a sham trial and sentenced to seven years in prison. After an intense international campaign, he was released after 400 days. In his inspiring, entertaining, and at times harrowing talk, Peter speaks about his experience behind bars, the psychological strategies he used to survive, and the lessons he still draws on today.



ORANGE SKY LAUNDRY
Mobile laundry service for the homeless

The power of conversation

Orange Sky is a not-for-profit organization providing free mobile laundry and shower services to people experiencing homelessness or hardship. Founded in 2014 by Nic Marchesi and Lucas Patchett in Brisbane, Orange Sky has grown to operate across Australia and New Zealand, delivering over 260 shifts weekly with the help of thousands of volunteers. While clean clothes and warm showers are essential, it's the genuine conversations and connections formed during these services that truly impact lives. Orange Sky's mission is to positively connect communities, offering dignity, respect, and support to those who need it most.

ENVIRONMENT & COMMUNITY STREAM SESSION 3

Climate Change Policy Challenges



KEVIN MASCARENHAS
National Product Manager - Sustainable Mining, Komatsu Australia Pty Ltd

Transforming Mining: Komatsu Push Toward Electrified, Low-Carbon Operations

Kevin Mascarenhas is Komatsu Australia's National Product Manager for Sustainable Mining, leading the deployment of the company's latest low and zero emission mining technologies. A qualified mechanical and mining engineer, Kevin holds a Master of Mining Engineering from UNSW and has over 12 years' experience with Komatsu. He began his career in reliability and application engineering, helping customers optimise fleet performance. Today, Kevin works closely with OEM factories and industry partners to drive the transition toward electrified, low-carbon operations, supporting Australian mining clients in reaching their decarbonisation goals.



SCOTT THOMSON
Managing Director, Coalbed Innovations

NSW open cut coal mine fugitive emissions abatement

Scott Thomson (B.Sc., M.Sc., MBA) is Managing Director of CoalBed Innovations and CoalBed Energy Consultants, bringing over 45 years' experience in coal mining and energy industries. A geologist by training, Scott specialises in gas reservoirs, advanced drilling technologies, and fugitive emissions abatement. He has worked extensively across major coal basins worldwide and supported technology transfer into emerging markets including China, India, Southern Africa, Central Asia, and Eastern Europe. Scott has authored several published papers and was co-recipient of the prestigious Stefanko Award for Best Paper at the 2008 SME Conference in Denver, USA.



SHAGOFTA ALI
Director Strategy and Policy, Climate and Environment Protection, NSW EPA

NSW EPA Climate Change Action Plan Update - Implications for the Mining Sector

Shagofta Ali is the Director of Strategy and Policy, Climate and Environment Protection at the NSW Environment Protection Authority (EPA). With over a decade of experience in strategy and policy reform across NSW and Australian governments, she has worked in diverse natural resource management areas including water, primary industries, crown land, resources, and energy portfolios. Shagofta is passionate about collaborating with diverse stakeholders to develop practical solutions to complex environmental challenges. She leads the NSW EPA's Climate Change Action Plan, focusing on its implications for the mining sector and broader sustainability goals.

HEALTH & SAFETY STREAM SESSION 3

Incident and Emergency Management



MITCH GARSIDE
Manager - Ore Processing, Evolution Mining Northparkes Operation

Incident Learnings: Safe Management of Chemical IBCs

Mitch Garside is the Processing Manager at Evolution Mining's Northparkes Operation in Central West NSW. With over 15 years of experience in the copper industry, Mitch has worked across both upstream and downstream processing operations, including concentrators, smelting, and refining in NSW and South Australia. He holds a Bachelor of Engineering from the University of Queensland, majoring in chemical and metallurgical engineering. Passionate about regional living, Mitch and his family enjoy life in Parkes, close to site. He brings a wealth of technical knowledge and operational insight to his role, with a strong focus on efficiency, safety, and continuous improvement.



ALASTER WYLIE
General Manager, Mines Rescue/Regulation & Compliance

Learnings from emergencies

Alaster Wylie is General Manager, Mines Rescue/Regulation & Compliance at Coal Services. With over 20 years of experience in underground coal mining, Alaster has held a variety of operational, management and project roles, giving him a strong understanding of WHS legislation, Safety Management Systems, and emergency response frameworks. Prior to joining Coal Services in 2019, he held senior management roles across several underground operations. Alaster holds a Mining Engineering Manager Practising Certificate, an Executive MBA, and serves as a Director of the International Mines Rescue Body, contributing to the advancement of global emergency response in mining.



ANDREW MCCOLM
Chief Investigator, NSW Resources Regulator, Department of Primary Industry & Regional Development

Investigating psychosocial incidents

Andrew McColm is Chief Investigator with the NSW Resources Regulator, bringing over 30 years' experience in WHS regulation, consulting, and investigations across government and industry. His background includes roles with regulatory authorities, national consultancies, and as Principal – Investigations and Learning for a global oil and gas company. A former police officer and prosecutor, Andrew also served as a WHS Senior Prosecutor, advising on compliance and enforcement, and handling prosecutions and coronial inquests. He has led investigations into more than 50 complex workplace incidents, primarily fatalities, and brings a deep understanding of psychosocial risks and workplace incident response.

ENVIRONMENT & COMMUNITY STREAM SESSION 4

Nature and Rehabilitation



MIKE SUTHERLAND
General Manager NSW, Alkane Resources

Thinking outside the Fuzzy Box: Tomingley Gold Operations Biodiversity Offset

Michael Sutherland is General Manager NSW at Alkane Resources, with over 32 years' experience in the mining industry and 17 years as a farmer. Originally from South Africa, Michael holds a Bachelor of Science from the University of Sydney, plus postgraduate qualifications in Community Relations and Australian Rural Leadership. He has been actively involved in natural resource management and community leadership at local, state, and national levels. Based in the Central West, Michael is passionate about mining's role in fostering resilience and sustainable development within regional communities.



ANNEKE MONTE
Nature Services Lead, Umwelt

Natural Capital in a mining context – the value and benefits

Anneke Monte is an experienced ecological consultant and land manager with over 15 years in ecology, restoration, and environmental assessment. As Nature Services Lead at Umwelt, Anneke specialises in nature-based solutions, natural capital, and ecological restoration. She has led numerous impact assessment and offset management projects across Australia, including a Natural Capital Accounting Pilot Project in NSW and WA. Anneke's work supports mining and infrastructure projects through ecological integration and sustainability planning. A regular conference presenter, she brings deep expertise and passion for valuing biodiversity, preserving ecosystems, and embedding nature-positive outcomes into major development projects.



JOHN SIMMONS
Principal, Sherwood Geotechnical & Research Services

Safe & Stable Landforms at Closure

John Simmons is Principal at Sherwood Geotechnical & Research Services and an independent consulting geotechnical engineer with over 30 years of experience in mine slope stability and operational geotechnical risk management. He has led or contributed to numerous ACARP-funded research projects that have helped shape best practice across Australia's open cut black coal sector. John has worked extensively on coal tailings storage capping projects and recently led the development of the Guidelines for Certification of Geotechnical Safety and Stability. His presentation will explore what safe and stable landforms look like at closure and how to meet geotechnical obligations into the future.

HEALTH & SAFETY STREAM SESSION 4

Workplace Health



SHARIF BURRA
Executive General Manager – Health,
Safety & Sustainability
Yancoal

Yancoal's Mental Health Program

Sharif is a highly experienced Mining Engineer and Mine Manager with 28 years in the mining industry. His career spans a wide range of operational, technical, financial, and executive leadership roles across both underground and open cut coal and gold operations. Sharif brings a practical understanding of mine site challenges alongside strategic insight gained from senior leadership positions. He is currently Head of Health, Safety and Sustainability at Yancoal, where he leads initiatives to improve safety performance and support sustainable mining practices across the organisation. His expertise reflects a strong commitment to people, performance, and continuous improvement in mining.



DAN HUNT
CEO & Co-Founding Director
Mental Health Movement

Yancoal's Mental Health Program

Dan Hunt is a former NRL player, father, husband, and the founder of Mental Health Movement (MHM). He was diagnosed with Type 2 bipolar disorder. That moment changed everything. Instead of letting adversity define him, he turned it into his purpose. Today, he leads one of Australia's most recognised workplace mental health organisations, partnering with 300+ companies and impacting over 500,000 workers nationwide. Backed by qualifications in Social Work, Mental Health, AOD, Community Services, Fitness, and Business, Dan bring a powerful combination of lived experience and expert knowledge to help organisations move beyond lip service. Through MHM, they deliver strategic, measurable solutions tackling psychosocial risks, building leadership capability, and driving culture change to create mentally healthy, high-performing workplaces. He's passionate about breaking stigma, shifting mindsets, and making sure no one feels alone in their struggle. Because when it comes to mental health, talk is cheap but action changes lives.



ANGELA HUNTER
Managing Director | CEO
Coal Services

Coal Services Update

Angela Hunter was appointed Managing Director and CEO of Coal Services in May 2025, bringing more than 35 years of leadership experience across the insurance, healthcare, financial services, and telecommunications sectors. She has held senior roles at organisations including Chubb, IAG, General Electric, Citibank, and Prudential, where she led high-performing teams through customer-focused digital transformations and complex regulatory landscapes. Angela is a Graduate of the Australian Institute of Company Directors and holds a Master-level Board Directorship qualification from the University of Hong Kong. She is also the founder of Financial Executive Women and a founding member of the Asia Businesswomen Leaders Council.



NICOLE GRAY
The Keil Centre

Stop telling us to be more resilient! Do personal resilience programs have a place in psychosocial hazard management?

Nicole Gray is a Psychologist and Human Factors specialist, and Head of Australian Operations at The Keil Centre. Based in Brisbane (Turrbal & Jagera Country), Nicole is a passionate advocate for systems-based approaches to optimising human performance in high-risk settings. Her career spans applied psychology and human factors roles across safety-critical industries including defence, aviation, mining, healthcare, and more. A former senior military officer and accident investigator, Nicole brings practical, evidence-based insights to workplace safety and wellbeing. She is known for delivering pragmatic, high-impact solutions that help organisations manage psychosocial hazards and build genuinely safe, high-performing environments.



JESSICA YATES
Health & Safety Stream Session Facilitator

Jessica Yates returns as host of the 2025 NSW Mining HSEC Conference. A respected FOX SPORTS presenter and proud mum of two, Jess is best known for her work across NRL and motorsport, including hosting Sunday Ticket, League Life, and FOX SPORTS' Supercars coverage. She's also been a boundary rider for Big Bash and one-day cricket, and hosted the red carpet at the Allan Border Medal. Jess has covered the ASP Surfing World Tour, interviewing icons like Mick Fanning, Joel Parkinson and Kelly Slater. Her warmth, energy and experience make her a favourite with audiences nationwide.



KATE HABERFIELD
Environment & Community Stream Session Facilitator

Kate Haberfield is a seasoned presenter and communications specialist, returning as a host for the 2025 NSW Mining HSEC Conference. Born and raised in Newcastle, Kate was the first and only female sports presenter in the history of NBN News, and currently serves as the only woman on the board of the Newcastle District Cricket Association. With a deep passion for storytelling and promoting excellence in regional communities, Kate brings warmth, professionalism and local insight to every event she hosts. Her experience and energy make her a highly regarded emcee across industry, sport and community events.

CONFERENCE HOSTS

WORKSHOP FACILITATORS



CHRIS DAVITT
Gravits Training Australia

Presenting with Power:
From Complexity to Clarity

Gain the confidence to communicate with impact in this dynamic workshop, led by Chris Davitt from Gravitas Training Australia. Designed specifically for HSEC Conference attendees, this practical session will help you simplify complex ideas and deliver your message with clarity, confidence, and professionalism. Chris will introduce proven frameworks and techniques to help you engage, persuade, and influence in any setting—whether it's a toolbox talk, stakeholder briefing, or large presentation. Walk away with tools to sharpen your message, connect with your audience, and make your communication more effective and impactful in today's high-stakes work environments.



CAM STEVENS
CEO | Lead Consultant - Pocketknife Group (PKG)

AI + WHS: Practical Insights for Mining:
Augmenting Health and Safety with Artificial Intelligence – Opportunities, Limitations & Risk Considerations

Cam Stevens is CEO and Lead Consultant at Pocketknife Group, where he helps organisations in mining, construction, energy and infrastructure harness emerging technologies to improve WHS outcomes. With a background in human-centred design, AI strategy and real-time risk management, Cam works with leading companies such as BHP, Fortescue and Siemens to align innovation with operational needs. He is Safety Technology Project Manager for Hansen Yuncken's Enforceable Undertaking and a 2025 EXPO keynote speaker. Known for his ability to demystify complex tech, Cam brings practical insight to the intersection of safety, digital transformation and the future of work.



EDWIN SMITH
Head Honcho, Social Sandwich

Mobile diesel equipment emissions reduction pathways

Edwin Smith is the Head Honcho at Social Sandwich and one of Australia's leading experts in organic social media strategy. With over a decade of experience, Edwin has worked on some of the country's biggest TV shows including Survivor, I'm a Celebrity... Get Me Out of Here, and 10 Sport. He now helps businesses, brands and creators apply the lessons of engaging television to their social media – creating content that connects, builds community, and reaches new audiences. Edwin's practical approach helps organisations cut through the noise and get results without relying on paid advertising.

WOMEN IN LEADERSHIP PANELISTS



SARAH WITHELL

Executive General Manager - Health, Safety & Environment, Whitehaven Coal

Sarah Withell is the Executive General Manager – Health, Safety and Environment at Whitehaven Coal, with over 25 years of experience in HSE leadership across Australia's mining and resources sector. She has driven significant improvements in safety and environmental outcomes, including a 25% reduction in TRIF and the elimination of environmental enforcement actions. Sarah has championed biodiversity initiatives, securing over 10,000 hectares for conservation. Her career spans senior HSE roles at BHP, Peabody, and Rio Tinto, and she is a recognised industry leader, holding a Master of Engineering Science, Bachelor of Science, and GAICD qualification.



HOPE MULVIHILL

Manager of Strategic Planning & Business Analysis, Glencore

With over 15 years of experience in the resource industry, Hope Mulvihill brings a rare combination of operational expertise, strategic leadership, and commercial acumen to her role as General Manager of Business Development and Technical Services at Glencore Coal Australia. Hope leads a national team responsible for planning, governance, and business growth, across Australia's largest coal portfolios. Known for her commercial insight and technical expertise, Hope was recently named the 2025 Exceptional Woman in NSW Mining. Her career reflects a commitment to operational excellence, strategic impact, and fostering capability across the resources industry.



RENATA ROBERTS

Chief Corporate Services Officer, The Bloomfield Group

Renata Roberts is Chief Corporate Services Officer at The Bloomfield Group, with over 23 years' experience in the resources industry across HR, Safety & Health, Risk, IR, Communications, Community, and IT. She is a passionate advocate for inclusion and mental health and serves as Chair of the Board at Firstchance. Renata created the Join Jackson's Journey children's book series to help build inclusive, respectful workplaces of the future. She was awarded the 2020 Exceptional Woman in Australian Resources and named among the 100 Global Inspirational Women in Mining in 2022. Renata is recognised for her leadership and industry contribution.